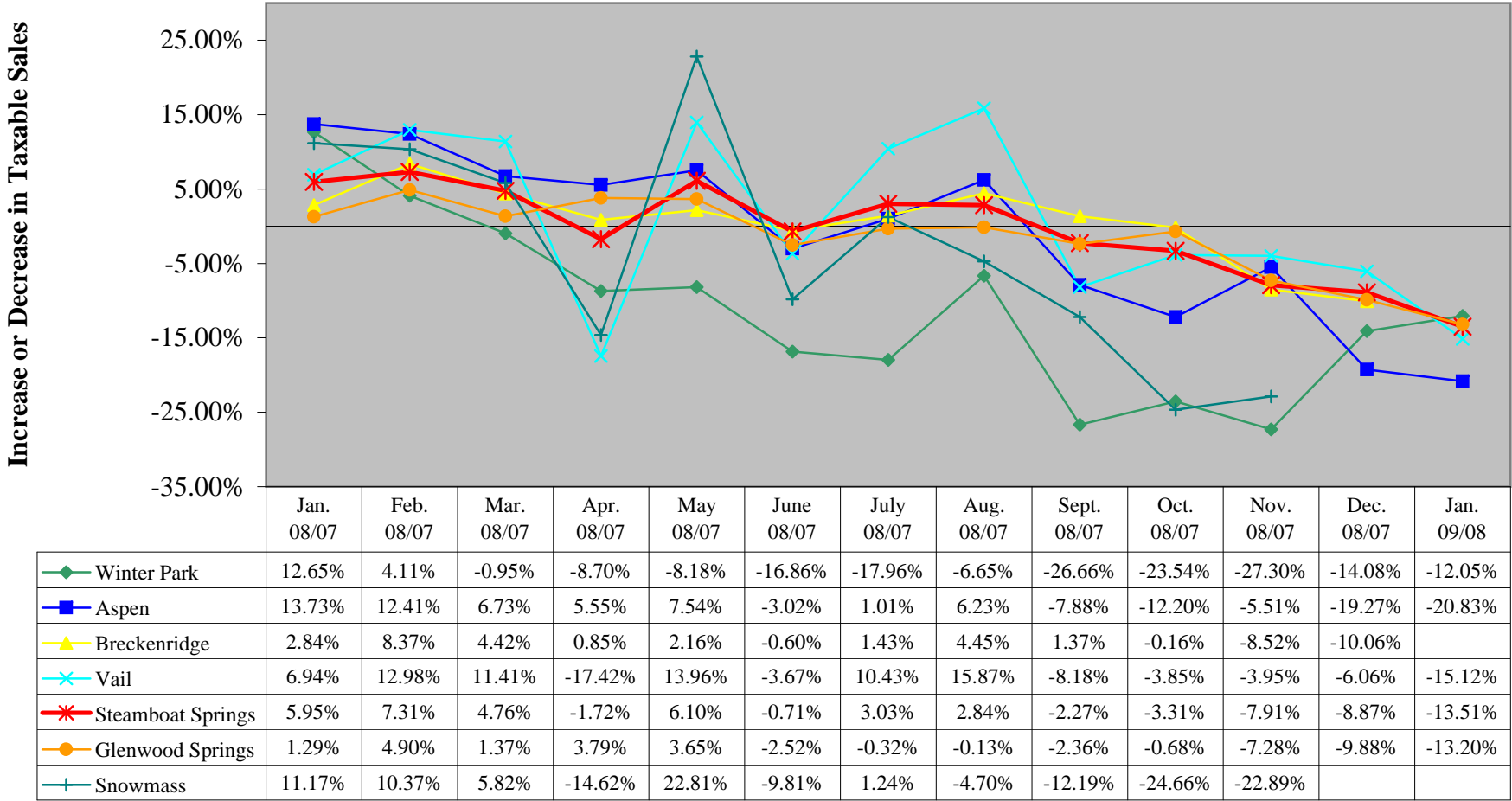


**Mountain Communities Report**  
**Taxable Sales (based on Sales/Use tax collected)**  
**2008/2007 to 2009/2008**

	Jan. 2008/2007	Feb. 2008/2007	Mar. 2008/2007	Apr. 2008/2007	May 2008/2007	Jun. 2008/2007	July 2008/2007	Aug. 2008/2007	Sept. 2008/2007	Oct. 2008/2007	Nov. 2008/2007	Dec. 2008/2007	Jan. 2009/2008	
<b>Sales - Winter Park (5%)</b>	\$ 12,822,940	\$ 12,421,840	\$ 17,360,140	\$ 4,661,300	\$ 2,089,000	\$ 4,326,360	\$ 4,481,200	\$ 4,988,260	\$ 3,501,440	\$ 2,234,020	\$ 3,145,340	\$ 12,258,780	\$ 11,277,600	
	\$ 11,382,580	\$ 11,931,640	\$ 17,526,960	\$ 5,105,520	\$ 2,275,040	\$ 5,203,660	\$ 5,462,080	\$ 5,343,380	\$ 4,773,960	\$ 2,921,900	\$ 4,326,640	\$ 14,267,820	\$ 12,822,940	
<i>Winter Park % Inc(Dec) in sales</i>	12.65%	4.11%	-0.95%	-8.70%	-8.18%	-16.86%	-17.96%	-6.65%	-26.66%	-23.54%	-27.30%	-14.08%	-12.05%	
												<b>Year-to-date:</b>	<b>-12.05%</b>	
<b>Sales - Aspen (2.2%)</b>	\$ 65,846,455	\$ 61,818,227	\$ 67,212,773	\$ 23,851,273	\$ 18,356,500	\$ 37,974,273	\$ 52,622,864	\$ 49,720,818	\$ 33,086,909	\$ 19,943,136	\$ 20,048,000	\$ 61,421,545	\$ 52,133,773	
	\$ 57,896,045	\$ 54,994,227	\$ 62,973,182	\$ 22,596,455	\$ 17,069,545	\$ 39,155,864	\$ 52,094,818	\$ 46,806,682	\$ 35,917,000	\$ 22,714,182	\$ 21,217,500	\$ 76,078,773	\$ 65,846,455	
<i>Aspen % Inc(Dec) in sales</i>	13.73%	12.41%	6.73%	5.55%	7.54%	-3.02%	1.01%	6.23%	-7.88%	-12.20%	-5.51%	-19.27%	-20.83%	
													<b>Year-to-date:</b>	<b>-20.83%</b>
<b>Sales - Breckenridge (2.5%)</b>	\$ 31,266,200	\$ 31,321,840	\$ 37,617,480	\$ 17,862,960	\$ 11,449,920	\$ 17,418,720	\$ 21,144,920	\$ 20,786,000	\$ 18,381,000	\$ 13,255,880	\$ 14,384,640	\$ 32,814,400	\$ -	
	\$ 30,403,240	\$ 28,903,920	\$ 36,026,240	\$ 17,712,160	\$ 11,207,800	\$ 17,523,920	\$ 20,846,120	\$ 19,901,000	\$ 18,132,840	\$ 13,277,640	\$ 15,723,640	\$ 36,483,240	\$ -	
<i>Breckenridge % Inc(Dec) in sales</i>	2.84%	8.37%	4.42%	0.85%	2.16%	-0.60%	1.43%	4.45%	1.37%	-0.16%	-8.52%	-10.06%	N/A	
<b>Sales - Steamboat Springs (4%)</b>	\$ 54,157,942	\$ 54,513,525	\$ 64,161,425	\$ 24,977,725	\$ 26,925,625	\$ 37,496,650	\$ 43,198,000	\$ 40,303,325	\$ 35,933,300	\$ 30,981,150	\$ 25,681,525	\$ 58,305,625	\$ 46,843,375	
	\$ 51,116,525	\$ 50,800,850	\$ 61,248,425	\$ 25,415,025	\$ 25,377,525	\$ 37,762,950	\$ 41,925,775	\$ 39,188,950	\$ 36,766,300	\$ 32,040,575	\$ 27,886,500	\$ 63,982,375	\$ 54,157,950	
<i>Steamboat % Inc(Dec) in sales</i>	5.95%	7.31%	4.76%	-1.72%	6.10%	-0.71%	3.03%	2.84%	-2.27%	-3.31%	-7.91%	-8.87%	-13.51%	
													<b>Year-to-date:</b>	<b>-13.51%</b>
<b>Sales - Vail (4%)</b>	\$ 74,411,275	\$ 76,785,250	\$ 83,177,475	\$ 27,472,875	\$ 15,552,500	\$ 22,951,450	\$ 34,944,850	\$ 33,680,775	\$ 20,849,450	\$ 16,549,575	\$ 17,958,100	\$ 66,271,100	\$ 63,162,875	
	\$ 69,582,650	\$ 67,966,075	\$ 74,661,150	\$ 33,268,500	\$ 13,646,850	\$ 23,825,425	\$ 31,644,525	\$ 29,068,650	\$ 22,707,950	\$ 17,212,975	\$ 18,696,925	\$ 70,546,775	\$ 74,411,275	
<i>Vail % Inc(Dec) in sales</i>	6.94%	12.98%	11.41%	-17.42%	13.96%	-3.67%	10.43%	15.87%	-8.18%	-3.85%	-3.95%	-6.06%	-15.12%	
													<b>Year-to-date:</b>	<b>-15.12%</b>
<b>Sales - Glenwood (3.7%)</b>	\$ 31,431,216	\$ 30,801,297	\$ 36,701,270	\$ 32,433,162	\$ 36,749,027	\$ 42,194,108	\$ 39,625,189	\$ 39,860,243	\$ 40,763,595	\$ 34,102,189	\$ 32,507,189	\$ 44,776,595	\$ 27,281,973	
	\$ 31,031,595	\$ 29,363,027	\$ 36,206,919	\$ 31,249,081	\$ 35,454,514	\$ 43,284,270	\$ 39,751,243	\$ 39,913,973	\$ 41,749,486	\$ 34,336,135	\$ 35,060,919	\$ 49,683,351	\$ 31,431,216	
<i>Glenwood % Inc(Dec) in sales</i>	1.29%	4.90%	1.37%	3.79%	3.65%	-2.52%	-0.32%	-0.13%	-2.36%	-0.68%	-7.28%	-9.88%	-13.20%	
													<b>Year-to-date:</b>	<b>-13.20%</b>
<b>Sales - Snowmass (1%)</b>	\$ 27,541,800	\$ 25,773,285	\$ 28,198,056	\$ 5,864,514	\$ 2,869,172	\$ 4,884,500	\$ 7,465,400	\$ 7,514,500	\$ 4,808,500	\$ 2,678,000	\$ 3,092,500	\$ -	\$ -	
	\$ 24,773,657	\$ 23,352,115	\$ 26,646,628	\$ 6,868,657	\$ 2,336,201	\$ 5,415,629	\$ 7,373,800	\$ 7,885,000	\$ 5,475,970	\$ 3,554,700	\$ 4,010,300	\$ -	\$ -	
<i>Snowmass % Inc(Dec) in sales</i>	11.17%	10.37%	5.82%	-14.62%	22.81%	-9.81%	1.24%	-4.70%	-12.19%	-24.66%	-22.89%	N/A	N/A	

# Mountain Communities - Monthly Comparison



*Note: Sales Tax data unavailable for Breckenridge and Snowmass for recent months*