



## Off-Leash Areas Transition To Summer Guidelines

*Keep Your Dog On A Leash Until Well Within The Off-Leash Areas*

**STEAMBOAT SPRINGS, COLORADO-April 26, 2021**-With spring break in the books and the city moving closer and closer towards summer, seasonal changes are taking place in portions of two off-leash areas including Butcherknife and Whistler Park, where segments of these parks that were off leash or leashed in winter will soon switch for summer.

“We need everyone’s help to ensure that all park users, both two- and four-legged get the most out of these areas,” said Animal Control Officer Jennifer Good. “Please be respectful of each other and follow the rules for each area.”

### Butcherknife

Starting June 9, school hour leash restrictions on the Butcherknife Trail are removed during the summer months while students are out of session. Once school starts in August, leash requirements will go back into place.

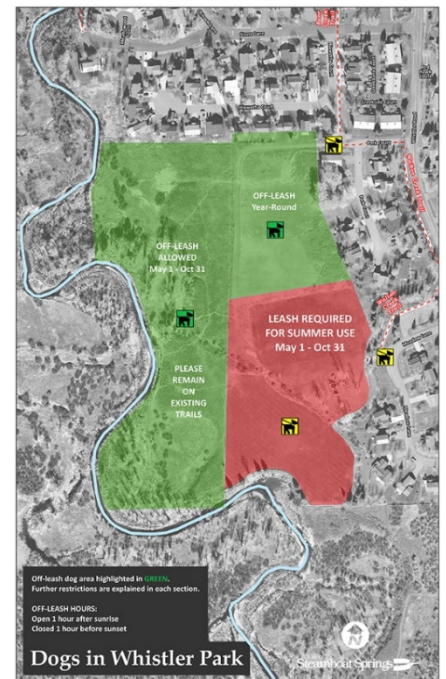
### Whistler Park

Whistler Park sees the southeast segment of the park, which includes the sports fields and playground, transition to leash required. In addition, the west portion of the dog area, which is leash required in the winter due to elk winter range, moves to off leash during the summer. The seasonal changes in Whistler Park are in effect from May 1 through October 31.

Off leash areas are clearly signed at entry/exit points with a map outlining details. Off leash hours in both dog parks, Rita Valentine & Spring Creek, and the three trial off leash areas (Butcherknife, Sailors Way and Whistler Park) run from one hour after sunrise to one hour before sunset.

Please keep in mind that a leash is required for all surrounding trails leading into Rita Valentine Dog Park as well as the parking lot. Dogs should remain on leash until within the dog park boundaries.

Keep your dog on a leash until well within the off-leash areas. When using these areas, voice and sight control as well as dog waste removal and disposal is required by law. Individuals can report animal complaints to Police Dispatch at 970.879.1144. Additional information and maps highlighting the Dog Parks and Off Leash Areas can be found at [steamboatsprings.net/offleash](http://steamboatsprings.net/offleash).



[-WeServeTheCity-](http://www.steamboatsprings.net)

### Contact:

Jennifer Good, Animal Control Officer, 970.879.4344 or [email](mailto:jgood@steamboatsprings.net)  
 Krista Amatuzio, Animal Control Officer, 970.879.4344 or [email](mailto:kamatuzio@steamboatsprings.net)