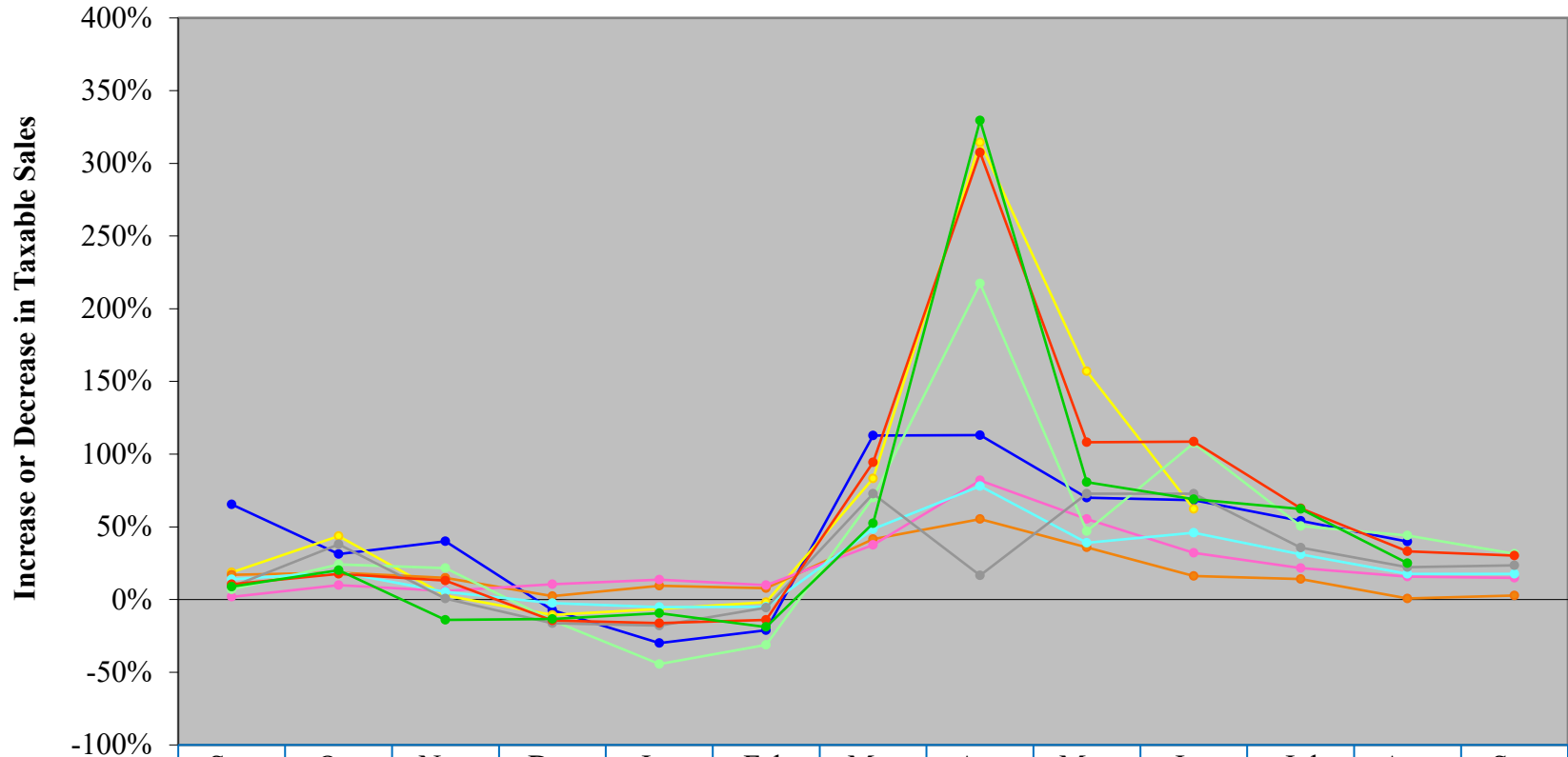


# Mountain Communities Report

## Taxable Sales (based on Sales/Use tax collected) 2021/2020 to 2020/2019

	September 2020/2019	October 2020/2019	November 2020/2019	December 2020/2019	January 2021/2020	February 2021/2020	March 2021/2020	April 2021/2020	May 2021/2020	June 2021/2020	July 2021/2020	August 2021/2020	September 2021/2020
<b>Sales - Aspen (2.1%)</b>	\$ 105,438,333	\$ 50,816,810	\$ 46,331,762	\$ 108,898,762	\$ 66,446,667	\$ 69,728,458	\$ 110,241,167	\$ 46,558,958	\$ 40,196,833	\$ 92,238,250	\$ 127,445,917	\$ 103,881,583	\$ -
<i>Aspen % Inc(Dec) in sales</i>	65.35%	31.25%	40.12%	-7.25%	-29.94%	-21.17%	112.79%	113.08%	70.11%	68.28%	54.11%	39.81%	-
	<b>Year-to-date: 33%</b>												
<b>Sales - Breckenridge (2.5%)</b>	\$ 53,109,640	\$ 46,236,240	\$ 41,030,720	\$ 83,811,600	\$ 79,054,120	\$ 79,732,400	\$ 100,155,440	\$ 49,265,480	\$ 34,233,880	\$ 57,484,800	\$ -	\$ -	\$ -
<i>Breckenridge % Inc(Dec) in sales</i>	18.63%	43.59%	2.77%	-10.58%	-6.54%	-1.89%	83.19%	314.37%	157.07%	62.29%	-	-	-
	<b>Year-to-date: 42%</b>												
<b>Sales - Frisco (4%)</b>	\$ 25,174,625	\$ 20,195,725	\$ 20,886,675	\$ 30,779,125	\$ 25,595,950	\$ 24,773,325	\$ 28,620,225	\$ 20,144,400	\$ 18,023,225	\$ 24,030,650	\$ 30,206,525	\$ 26,416,150	\$ 25,886,625
<i>Frisco % Inc(Dec) in sales</i>	17.03%	18.56%	13.00%	2.32%	9.56%	7.86%	41.54%	55.31%	35.89%	16.16%	14.10%	0.76%	2.83%
	<b>Year-to-date: 17%</b>												
<b>Sales - Glenwood (3.7%)</b>	\$ 49,113,027	\$ 45,676,541	\$ 40,242,946	\$ 59,895,216	\$ 38,752,081	\$ 37,571,811	\$ 50,325,730	\$ 45,705,054	\$ 52,264,324	\$ 60,917,622	\$ 56,888,189	\$ 49,183,622	\$ 56,588,865
<i>Glenwood % Inc(Dec) in sales</i>	1.84%	9.80%	5.97%	10.56%	13.68%	9.80%	37.50%	81.88%	55.45%	32.13%	21.72%	15.76%	15.02%
	<b>Year-to-date: 29%</b>												
<b>Sales - Snowmass Vill (1%)</b>	\$ 13,329,724	\$ 9,088,831	\$ 10,607,667	\$ 30,895,217	\$ 23,761,953	\$ 28,268,228	\$ 38,069,584	\$ 14,660,552	\$ 6,907,862	\$ 14,202,895	\$ 22,513,894	\$ 18,753,104	\$ 17,576,053
<i>Snowmass % Inc(Dec) in sales</i>	6.97%	24.05%	21.52%	-14.33%	-44.37%	-31.16%	69.96%	217.28%	46.91%	107.46%	50.53%	44.01%	31.54%
	<b>Year-to-date: 13%</b>												
<b>Sales - Steamboat Springs (4%)</b>	\$ 62,826,950	\$ 52,660,305	\$ 44,543,620	\$ 91,127,787	\$ 73,244,304	\$ 73,070,057	\$ 88,787,842	\$ 46,234,841	\$ 48,615,416	\$ 73,872,657	\$ 77,785,684	\$ 67,792,111	\$ 73,844,368
<i>Steamboat % Inc(Dec) in sales</i>	13.86%	18.98%	5.27%	-2.44%	-5.23%	-4.92%	48.44%	78.01%	38.97%	45.97%	30.96%	17.71%	17.55%
	<b>Year-to-date: 23%</b>												
<b>Sales - Telluride (4.5%)</b>	\$ 19,226,422	\$ 13,247,267	\$ 7,774,556	\$ 17,330,956	\$ 15,643,200	\$ 17,790,467	\$ 21,673,600	\$ 6,656,444	\$ 9,623,000	\$ 21,032,667	\$ 27,984,244	\$ 23,442,089	\$ 23,752,689
<i>Telluride % Inc(Dec) in sales</i>	8.86%	38.05%	0.75%	-16.33%	-17.92%	-5.63%	72.68%	16.57%	72.80%	72.79%	35.60%	22.21%	23.54%
	<b>Year-to-date: 26%</b>												
<b>Sales - Vail (4%)</b>	\$ 44,184,825	\$ 34,293,175	\$ 35,636,525	\$ 90,629,725	\$ 85,391,175	\$ 92,139,425	\$ 108,960,250	\$ 43,550,450	\$ 26,214,775	\$ 53,386,450	\$ 84,834,875	\$ 71,216,050	\$ 57,576,800
<i>Vail % Inc(Dec) in sales</i>	10.46%	17.73%	13.10%	-14.44%	-16.20%	-14.00%	94.27%	307.47%	108.12%	108.64%	62.78%	33.19%	30.31%
	<b>Year-to-date: 34%</b>												
<b>Sales - Winter Park (7%)</b>	\$ 9,631,823	\$ 6,005,139	\$ 6,063,385	\$ 20,175,043	\$ 16,252,643	\$ 15,002,729	\$ 20,451,457	\$ 9,520,157	\$ 5,291,814	\$ 11,260,400	\$ 15,380,043	\$ 11,134,929	\$ -
<i>Winter Park % Inc(Dec) in sales</i>	8.82%	20.12%	-14.07%	-13.29%	-9.33%	-18.92%	52.46%	329.54%	80.74%	68.93%	62.36%	24.91%	-
	<b>Year-to-date: 30%</b>												

## Mountain Communities - Monthly Comparison



	Sep 20/19	Oct 20/19	Nov 20/19	Dec 20/19	Jan 21/20	Feb 21/20	Mar 21/20	Apr 21/20	May 21/20	Jun 21/20	Jul 21/20	Aug 21/20	Sep 21/20
Aspen	65.35%	31.25%	40.12%	-7.25%	-29.94%	-21.17%	112.79	113.08	70.11%	68.28%	54.11%	39.81%	
Breckenridge	18.63%	43.59%	2.77%	-10.58%	-6.54%	-1.89%	83.19%	314.37	157.07	62.29%			
Frisco	17.03%	18.56%	15.00%	2.32%	9.56%	7.86%	41.54%	55.31%	35.89%	16.16%	14.10%	0.76%	2.83%
Glenwood Springs	1.84%	9.80%	5.97%	10.56%	13.68%	9.80%	37.50%	81.88%	55.45%	32.13%	21.72%	15.76%	15.02%
Snowmass Village	6.97%	24.05%	21.52%	-14.33%	-44.37%	-31.16%	69.96%	217.28	46.91%	107.46	50.53%	44.01%	31.54%
Steamboat Springs	13.86%	18.98%	5.27%	-2.44%	-5.23%	-4.92%	48.44%	78.01%	38.97%	45.97%	30.96%	17.71%	17.55%
Telluride	8.86%	38.05%	0.75%	-16.35%	-17.92%	-5.63%	72.68%	16.57%	72.80%	72.79%	35.60%	22.21%	23.54%
Vail	10.46%	17.73%	13.10%	-14.44%	-16.20%	-14.00%	94.27%	307.47	108.12	108.64	62.78%	33.19%	30.31%
Winter Park	8.82%	20.12%	-14.07%	-13.29%	-9.33%	-18.92%	52.46%	329.54	80.74%	68.93%	62.36%	24.91%	