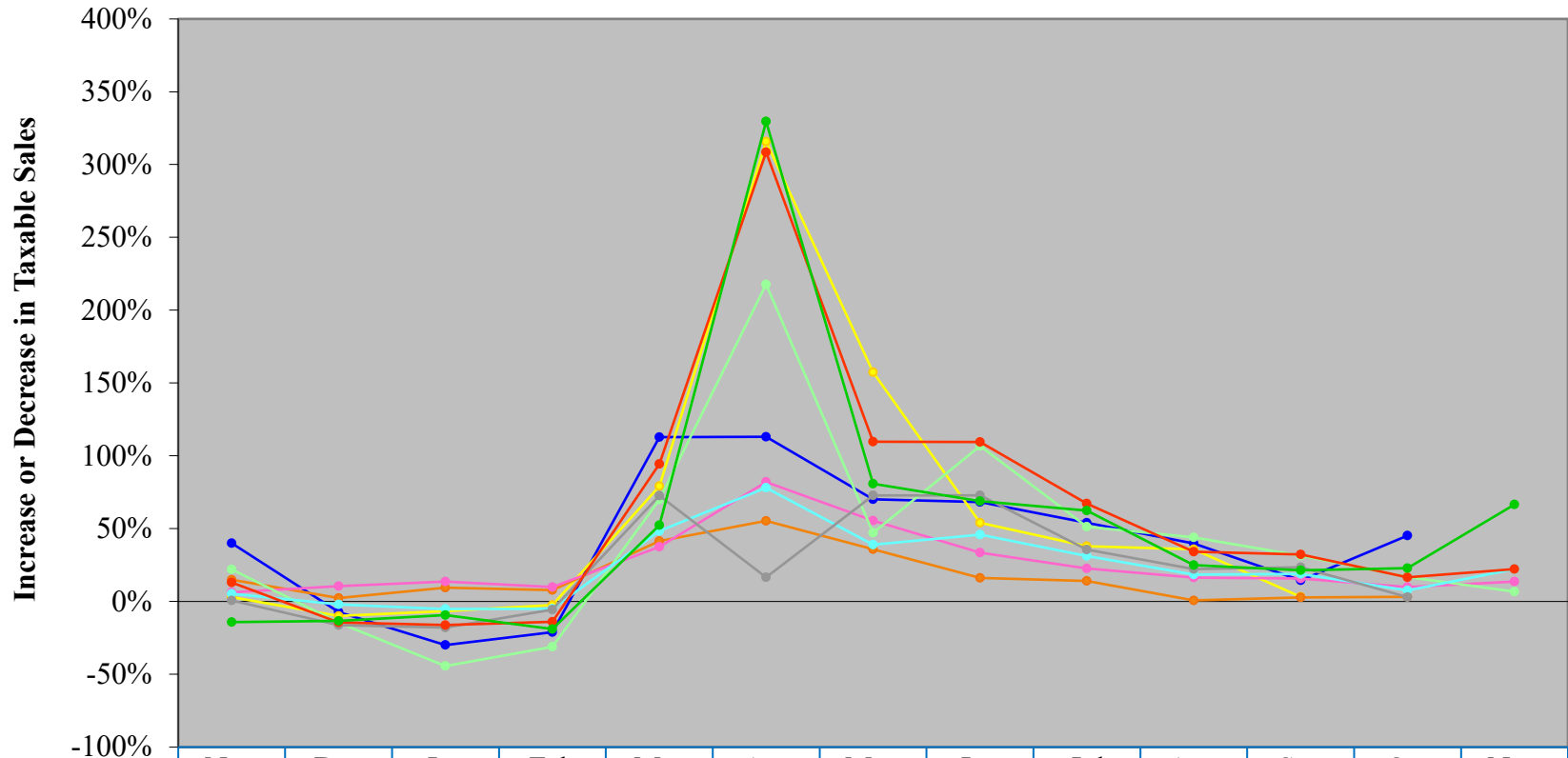


# Mountain Communities Report

## Taxable Sales (based on Sales/Use tax collected) 2021/2020 to 2020/2019

	November 2020/2019	December 2020/2019	January 2021/2020	February 2021/2020	March 2021/2020	April 2021/2020	May 2021/2020	June 2021/2020	July 2021/2020	August 2021/2020	September 2021/2020	October 2021/2020	November 2021/2020
<b>Sales - Aspen (2.4%)</b>	\$ 40,540,292	\$ 95,286,417	\$ 66,446,667	\$ 69,728,458	\$ 110,241,167	\$ 46,558,958	\$ 40,196,833	\$ 92,238,250	\$ 127,445,917	\$ 103,881,583	\$ 105,702,417	\$ 64,569,250	\$ -
<i>Aspen % Inc(Dec) in sales</i>	40.12%	-7.25%	-29.94%	-21.17%	112.79%	113.08%	70.11%	68.28%	54.11%	39.81%	14.57%	45.21%	-
	<i>Year-to-date: 31%</i>												
<b>Sales - Breckenridge (2.5%)</b>	\$ 41,157,632	\$ 84,616,219	\$ 79,022,830	\$ 79,746,866	\$ 100,183,386	\$ 49,437,818	\$ 34,289,597	\$ 57,704,278	\$ 77,103,945	\$ 73,541,470	\$ 55,462,284	\$ -	\$ -
<i>Breckenridge % Inc(Dec) in sales</i>	3.08%	-9.93%	-6.64%	-2.42%	79.22%	315.84%	157.44%	54.04%	37.95%	35.85%	3.13%	-	-
	<i>Year-to-date: 35%</i>												
<b>Sales - Frisco (4%)</b>	\$ 20,886,675	\$ 30,779,125	\$ 25,595,950	\$ 24,773,325	\$ 28,620,225	\$ 20,150,650	\$ 18,023,225	\$ 24,030,650	\$ 30,206,525	\$ 26,416,150	\$ 25,886,625	\$ 20,843,600	\$ -
<i>Frisco % Inc(Dec) in sales</i>	15.00%	2.32%	9.56%	7.86%	41.54%	55.36%	35.89%	16.16%	14.10%	0.76%	2.83%	3.21%	-
	<i>Year-to-date: 16%</i>												
<b>Sales - Glenwood (3.7%)</b>	\$ 40,363,703	\$ 59,895,216	\$ 38,752,730	\$ 37,574,459	\$ 50,334,270	\$ 45,738,676	\$ 52,282,757	\$ 61,594,054	\$ 57,348,703	\$ 49,459,162	\$ 57,000,541	\$ 50,352,351	\$ 45,852,649
<i>Glenwood % Inc(Dec) in sales</i>	6.29%	10.56%	13.68%	9.81%	37.51%	82.01%	55.50%	33.59%	22.71%	16.41%	15.85%	9.93%	13.60%
	<i>Year-to-date: 26%</i>												
<b>Sales - Snowmass Vill (1%)</b>	\$ 10,648,694	\$ 30,764,075	\$ 23,784,638	\$ 28,289,186	\$ 38,089,986	\$ 14,696,027	\$ 6,951,897	\$ 14,238,444	\$ 22,694,457	\$ 18,780,987	\$ 17,596,251	\$ 10,674,867	\$ 11,366,587
<i>Snowmass % Inc(Dec) in sales</i>	22.04%	-14.67%	-44.36%	-31.13%	69.90%	217.75%	47.06%	106.73%	51.30%	43.98%	31.35%	16.80%	6.74%
	<i>Year-to-date: 13%</i>												
<b>Sales - Steamboat Springs (4%)</b>	\$ 44,544,000	\$ 91,749,573	\$ 73,266,234	\$ 73,121,619	\$ 88,838,046	\$ 46,270,680	\$ 48,628,552	\$ 73,918,205	\$ 78,000,587	\$ 68,257,662	\$ 74,707,173	\$ 56,706,661	\$ 54,463,230
<i>Steamboat % Inc(Dec) in sales</i>	5.25%	-2.02%	-5.21%	-4.88%	48.46%	78.08%	38.97%	45.96%	31.24%	18.51%	18.93%	7.69%	22.27%
	<i>Year-to-date: 22%</i>												
<b>Sales - Telluride (4.5%)</b>	\$ 7,774,556	\$ 17,330,956	\$ 15,643,200	\$ 17,790,467	\$ 21,673,600	\$ 6,656,444	\$ 9,623,000	\$ 21,032,667	\$ 27,984,244	\$ 23,442,089	\$ 23,752,689	\$ 136,458	\$ -
<i>Telluride % Inc(Dec) in sales</i>	0.75%	-16.35%	-17.92%	-5.63%	72.68%	16.57%	72.80%	72.79%	35.60%	22.21%	23.54%	3.01%	-
	<i>Year-to-date: 26%</i>												
<b>Sales - Vail (4%)</b>	\$ 35,636,525	\$ 90,629,725	\$ 85,424,125	\$ 92,169,200	\$ 108,992,875	\$ 43,660,625	\$ 26,410,350	\$ 53,593,800	\$ 87,126,950	\$ 71,731,250	\$ 58,442,325	\$ 40,008,450	\$ 43,568,975
<i>Vail % Inc(Dec) in sales</i>	13.10%	-14.44%	-16.17%	-13.97%	94.32%	308.50%	109.68%	109.45%	67.18%	34.15%	32.27%	16.67%	22.26%
	<i>Year-to-date: 33%</i>												
<b>Sales - Winter Park (7%)</b>	\$ 6,063,385	\$ 20,175,043	\$ 16,252,643	\$ 15,002,729	\$ 20,451,457	\$ 9,520,157	\$ 5,291,814	\$ 11,260,400	\$ 15,380,043	\$ 11,134,929	\$ 11,695,829	\$ 7,380,953	\$ 10,099,435
<i>Winter Park % Inc(Dec) in sales</i>	-14.07%	-13.29%	-9.33%	-18.92%	52.46%	329.54%	80.74%	68.93%	62.36%	24.91%	21.43%	22.91%	66.56%
	<i>Year-to-date: 31%</i>												

## Mountain Communities - Monthly Comparison



	Nov 20/19	Dec 20/19	Jan 21/20	Feb 21/20	Mar 21/20	Apr 21/20	May 21/20	Jun 21/20	Jul 21/20	Aug 21/20	Sep 21/20	Oct 21/20	Nov 21/20
Aspen	40.12%	-7.25%	-29.94%	-21.17%	112.79	113.08	70.11%	68.28%	54.11%	39.81%	14.57%	45.21%	
Breckenridge	3.08%	-9.93%	-6.64%	-2.42%	79.22%	315.84	157.44	54.04%	37.95%	35.85%	3.13%		
Frisco	15.00%	2.32%	9.56%	7.86%	41.54%	55.36%	35.89%	16.16%	14.10%	0.76%	2.83%	3.21%	
Glenwood Springs	6.29%	10.56%	13.68%	9.81%	37.51%	82.01%	55.50%	33.59%	22.71%	16.41%	15.85%	9.93%	13.60%
Snowmass Village	22.04%	-14.67%	-44.36%	-31.13%	69.90%	217.75	47.06%	106.73	51.30%	43.98%	31.35%	16.80%	6.74%
Steamboat Springs	5.25%	-2.02%	-5.21%	-4.88%	48.46%	78.08%	38.97%	45.96%	31.24%	18.51%	18.93%	7.69%	22.27%
Telluride	0.75%	-16.35%	-17.92%	-5.63%	72.68%	16.57%	72.80%	72.79%	35.60%	22.21%	23.54%	3.01%	
Vail	13.10%	-14.44%	-16.17%	-13.97%	94.32%	308.50	109.68	109.45	67.18%	34.15%	32.27%	16.67%	22.26%
Winter Park	-14.07%	-13.29%	-9.33%	-18.92%	52.46%	329.54	80.74%	68.93%	62.36%	24.91%	21.43%	22.91%	66.56%